

CHURCH OF GOD IN CHRIST

DAVID WEESNER ASSOCIATES
 ARCHITECTURE and PLANNING
 2101 EAST BIJOU STREET
 COLORADO SPRINGS, COLORADO 80909
 (719) 413-2010 FAX (719) 413-2011

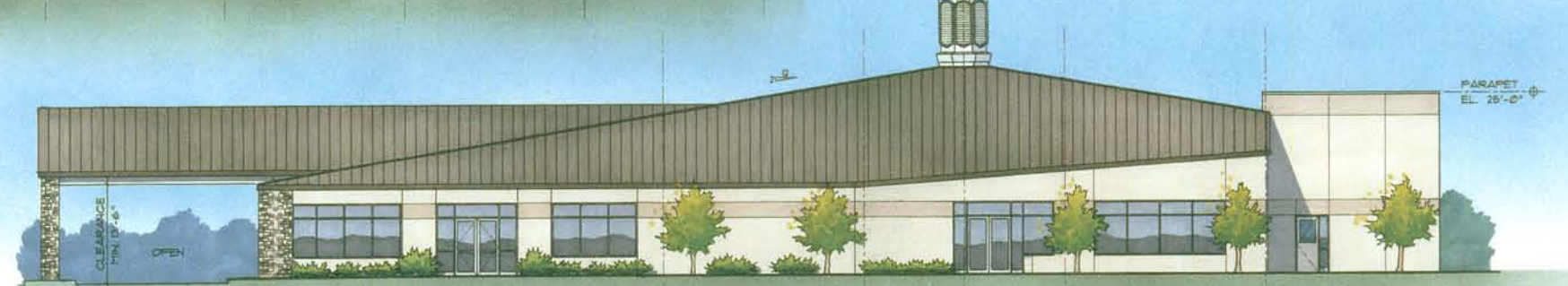


LEFT SIDE
 (WEST) ELEV
 SCALE: 3/32" = 1'-0"

REAR (NORTH) ELEVATION
 SCALE: 3/32" = 1'-0"

BUILDING MATERIALS:

WALL AREAS:	STUCCO WITH CULTURED STONE ACCENTS
ROOF, GUTTERS & DOWNSPOUTS:	STANDING SEAM METAL - PREFINISHED
WINDOWS/DOORS:	PREFINISHED ALUMINUM W/TINTED GLASS



RIGHT SIDE (EAST) ELEV
 SCALE: 3/32" = 1'-0"



FRONT (SOUTH) ELEVATION
 SCALE: 3/32" = 1'-0"